

VALENCIA AT ABACOA - PHASE I

BEING A REPLAT OF TRACT R100 AND A PORTION OF TRACT RN6A2, ABACOA PLAT NO. 2 AS RECORDED IN PLAT BOOK 86, PAGES 16 THROUGH 28 OF THE PUBLIC RECORDS OF PALM BEACH COUNTY, FLORIDA. LYING IN SECTION 13, TOWNSHIP 41 SOUTH, RANGE 42 EAST

SHEET 2 OF 7 MARCH, 2001

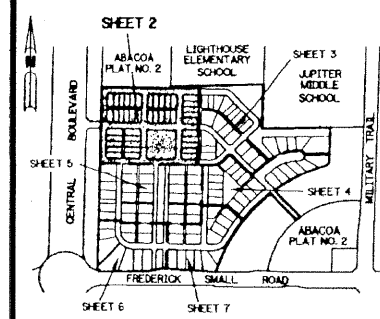
91

THIS INSTRUMENT PREPARED BY
WILBUR F. DIVINE, P.S.M. 4190, STATE OF FLORIDA
LAWSON, NOBLE AND WEBB, INC.
ENGINEERS PLANNERS SURVEYORS
420 COLUMBIA DRIVE
WEST PALM BEACH, FLORIDA 33409
LB-6674

UNPLATTED
SCHOOL DISTRICT OF PALM BEACH COUNTY
(O.R.B. 5610, PG. 444)

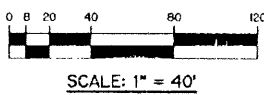
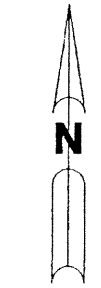
LEGEND:

- - SET PERMANENT REFERENCE MONUMENT, L.B. #6674
- - FOUND PERMANENT REFERENCE MONUMENT, L.B. #6674
- - SET PERMANENT CONTROL POINT, L.B. #6674
- - FOUND PERMANENT CONTROL POINT, L.B. #6674
- Δ - DELTA ANGLE
- BE - BUFFER EASEMENT
- CB - CHORD BEARING
- CH - CHORD DISTANCE
- CL - CENTERLINE
- D.B. - DEED BOOK
- D.E. - DRAINAGE EASEMENT
- L - ARC LENGTH
- L.A.E. - LIMITED ACCESS EASEMENT
- L.M.A.E. - LAKE MAINTENANCE ACCESS EASEMENT
- L.M.E. - LAKE MAINTENANCE EASEMENT
- N.R. - NOT RADIAL
- N.T.S. - NOT TO SCALE
- O.R.B. - OFFICIAL RECORD BOOK
- P.B. - PLAT BOOK
- P.G.S. - PAGES
- P.C.C. - POINT OF COMPOUND CURVATURE
- P.C. - POINT OF CURVATURE
- P.D.E. - PUBLIC DRAINAGE EASEMENT
- P.I. - POINT OF INTERSECTION
- P.T. - POINT OF TANGENCY
- P.S.M. - PROFESSIONAL SURVEYOR AND MAPPER
- R - RADIUS
- RAD. - RADIAL
- R/W - RIGHT-OF-WAY
- U.E. - UTILITY EASEMENT
- S.S.E. - SAFE SITE EASEMENT
- 7376480171
- 9052562326
- DENOTES STATE PLANE COORDINATES

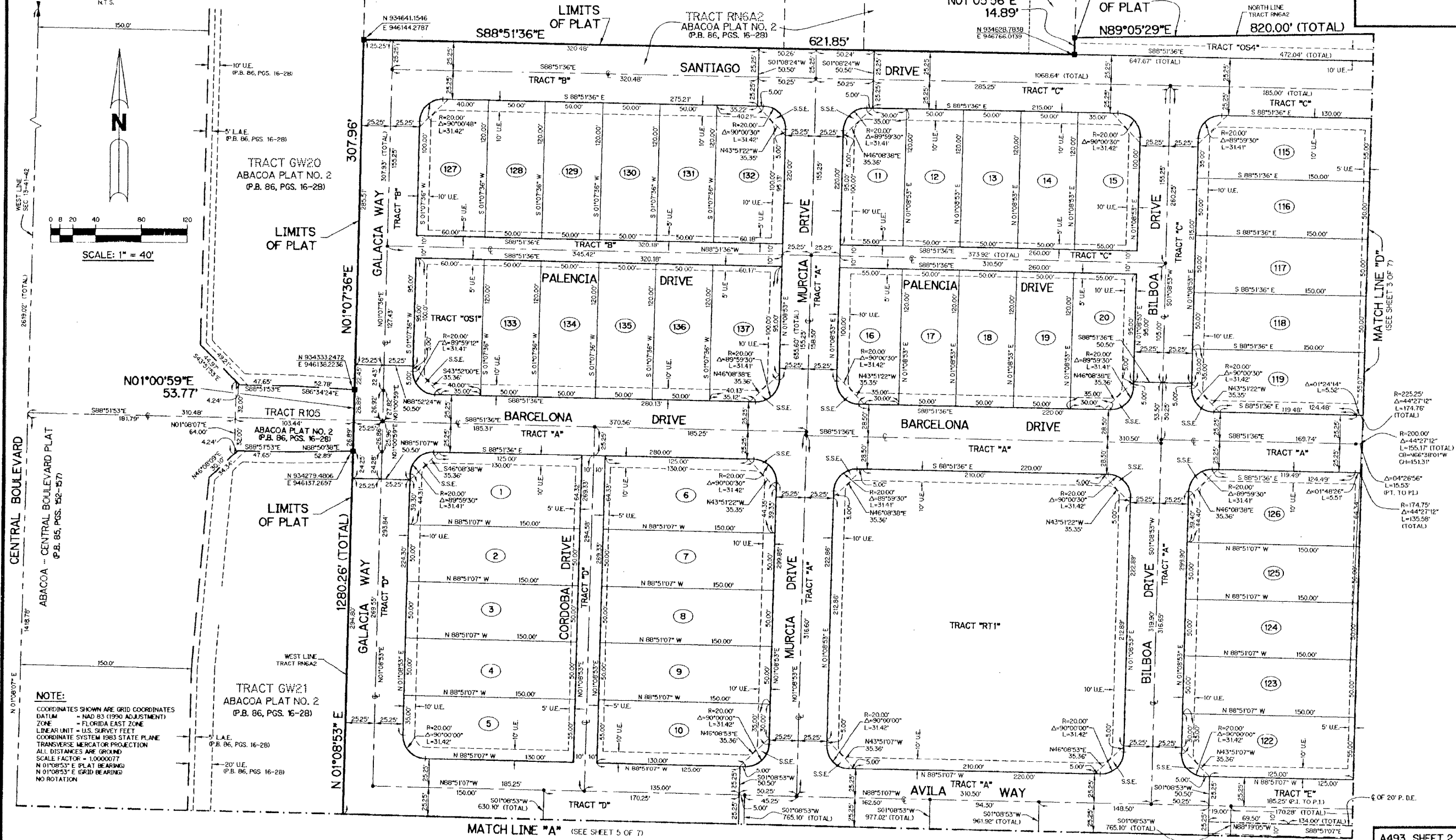


KEY MAP

N.T.S.



SCALE: 1" = 40'



NOTE:
COORDINATES SHOWN ARE GRID COORDINATES
DATUM - NAD 83 (1990 ADJUSTMENT)
ZONE - FLORIDA EAST ZONE
LINEAR UNIT - U.S. SURVEY FEET
COORDINATE SYSTEM 1983 STATE PLANE
TRANSVERSE MERCATOR PROJECTION
ALL DISTANCES ARE GROUND
SCALE FACTOR = 1.000077
N 01°08'53" E PLAT BEARING
N 01°08'53" E GRID BEARING
NO ROTATION

MATCH LINE "A" (SEE SHEET 5 OF 7)

A493 SHEET 2 OF 7